

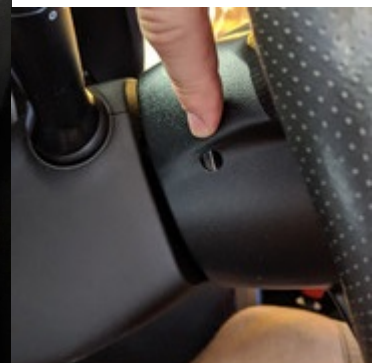
# FITTING INSTRUCTIONS FOR SUBARU BRZ /TOYOTA GT86 STEERING WHEEL SPACER – PRE-2016 VERSION, WITHOUT STEERING WHEEL BUTTONS

## Warnings:

- 1) Park the car with the straight wheels before installation, because the spline does not have any marker (made as extra wide teeth like other car brands) that allow the coupling in one way only.
- 2) Disconnect the battery before installation. This will avoid warning lights on after the procedure.
- 3) **Be carefull while handling the harness which come out from the clockspring assembly: never pull it**, and pay attention about **no pulling it accidentally**, you can damage the clockspring assembly, and/or hear an annoying “click” while rotating the steering wheel at the end of the job, which requires to re-do the whole procedure only for pushing back the wires towards the clockspring assembly.

INSTALLATION PROCEDURE - There are many tutorials on the internet / youtube, about how to remove the airbag and the steering wheel, I resume here the steps required, but it's much easier after looking a video.

- 1) Pull out the airbag unit from the steering wheel: push the the 3 pin springs behind each spoke. You can see the springs from 3 circular holes

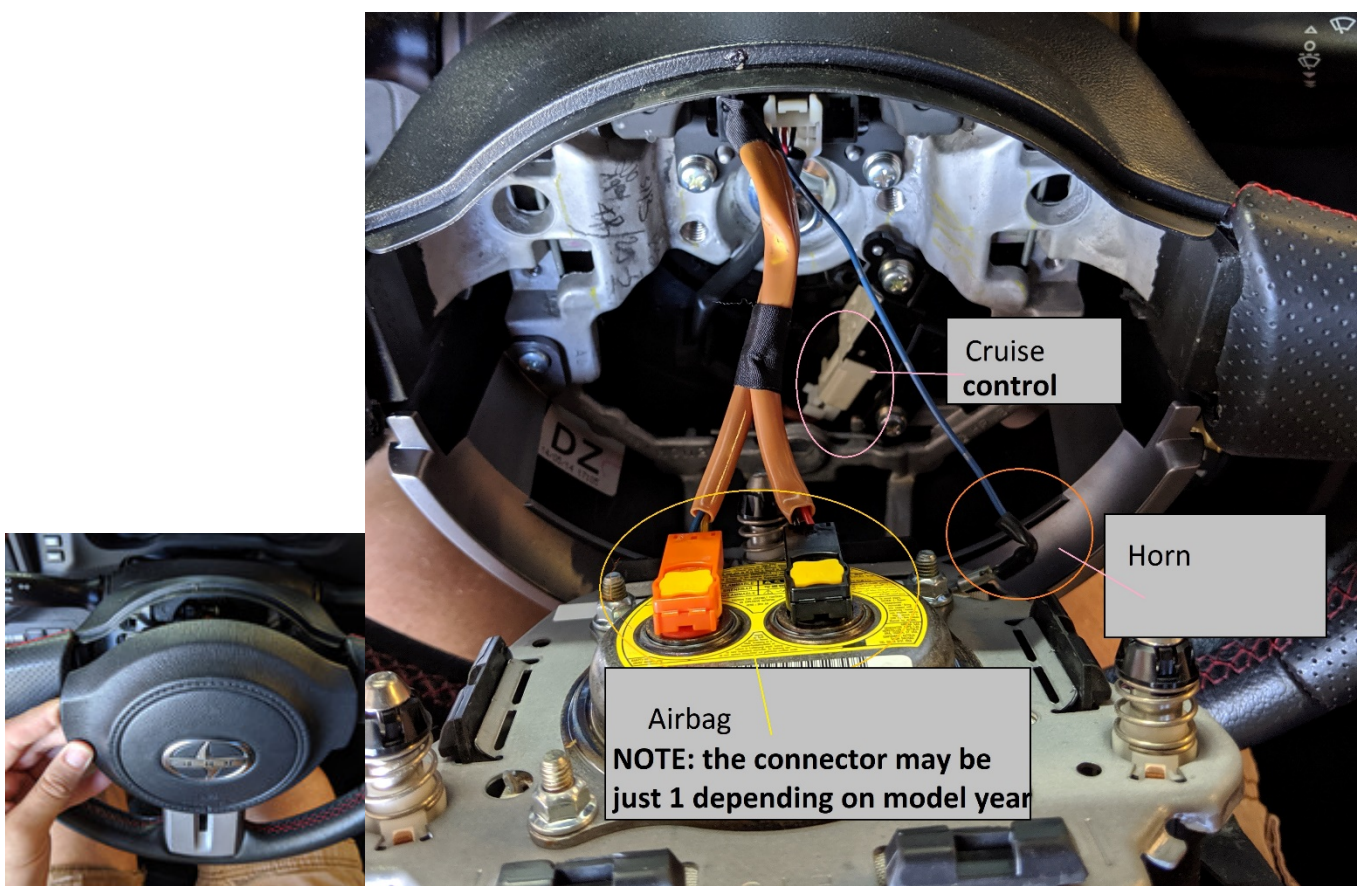




This is how the springs look after you remove the airbag, to help understand how to unclip them.



When the airbag unit is in your hands, unplug the connector in the back of it. Don't pull it out with force, it all have a secure plastic clip, unlock it first.







Pull out the horn wire, it may require some force.

- 2) Lay the airbag unit far from working area and children.
- 3) Unlock the central nut, **without removing it yet**: the steering wheel can be hard to pull out in some case, and sudden unlock may result in hurt yourself by throwing the steering wheel on your teeth, also, pulling it out too fast may damage the pending harnesses. An extractor may be necessary. It fits in the 2 M8 holes close to the central nut and with a central screw you will be able to unlock the steering wheel from the column. If you don't have a puller, you can give some radial punches to the steering wheel, or try to pull it 1 hand per time left and right.



- 4) When you're sure the steering wheel is easy to come out (it slides on the steering column, just stopped from the nut), remove the nut and store both nut and steering wheel somewhere, for example, the passenger seat.
- 5) Now you can install the spacer. Because it comes pre-assembled, you should disassemble it first, unscrewing the 6 bolts.



- 6) Fit the aluminum side of the steering wheel spacer on the steering column, keeping the orientation of the slots horizontal. The little slot must stay up as it is on the steering wheel. The

airbag wire must go across the slot in the spacer Tight the central OEM nut what was holding the steering wheel on the column at the same torque of **30 ft-lb / 40 Nm**

- 7) Fit the male splined steel side of the spacer on the aluminium side, tightening the bolts at 10 Nm. Use Loctite. The steel shaft has a marker or an inscription “this side up” that must face the sky, otherwise you will have off-center steering wheel at the end of the procedure.



- 8) Fit the steering wheel back in place. Fitting is the opposite of removal. The only difference is that you're going to insert the steering wheel on the extended shaft, instead of the steering column. The airbag wire must go through the central square slot, in line with the corresponding slot in the steering wheel spacer. Tight the central nut at **30 ft-lb / 40 Nm**
- 9) Reconnecting the airbag: first connect the horn to the airbag unit, then the airbag wire. The airbag wire is long enough to be reconnected without being cut and extend, but there is not much room to reconnect the connector. You should pre align the airbag unit on the steering wheel, slightly detached from the steering wheel itself (2 cm, 1" or less), then you must use 2 fingers to pre-align the connector in it's socket (respect the alignment: the connector has 1 orientation only), then press the connector in, and when it is in press the secure clip. You will hear a “click” in all these 2 steps. This is going to be more a tactile than a visual job. Take your time and patience before doing it: it's simple, but tricky. Push the airbag in the steering wheel assembly, making the engagement of the 3 springs which you have touched at the begin. It's a bit more than pressing the horn. Again, have a look on youtube tutorials about steering wheel installation, to clear doubts and see how is it done.
- 10)Reconnect the battery. **END.**